

Type : 4EG132M4F-PA-B0-000**Date** : 01.01.2023

Power [kW]	: 7.50	Efficiency Class	: IE4
Input Voltage [V]	: 400	Duty Cycle	: S1
Connection Type [Δ / Y]	: Δ	Service Factor	: 1.25
Frequency [Hz]	: 50	Frame Size	: 132M
Pole Number	: 4	Weight [kg]	: 90
Nominal Speed [rpm]	: 1470	Insulation Class	: F [155°C]
Nominal Current [A]	: 14.6	Temperature Rise	: B [80°K]
Nominal Moment [Nm]	: 48.7	Protection Class	: IP55
Nominal Efficiency [η]	: 92.6	Vibration Severity Grade	: A
Power Factor [cosφ]	: 0.80	Method of Cooling	: IC411 (TEFC)
Locked Rotor Current [I _a /I _n]	: 7.7	Direction of Rotation	: Bidirectional
Locked Rotor Torque [M _a /M _n]	: 3.8	Balance	: Half Key
Breakdown Torque [M _k /M _n]	: 4.0	Motor Thermal Protection	: --
Motor Color	: RAL 7031	Altitude Above Sea Level	: 1000m
Ambient Temperature	: -15°C / +40°C	Sound Pressure Level [dB(A)]	: 62

ELECTRICAL DATA

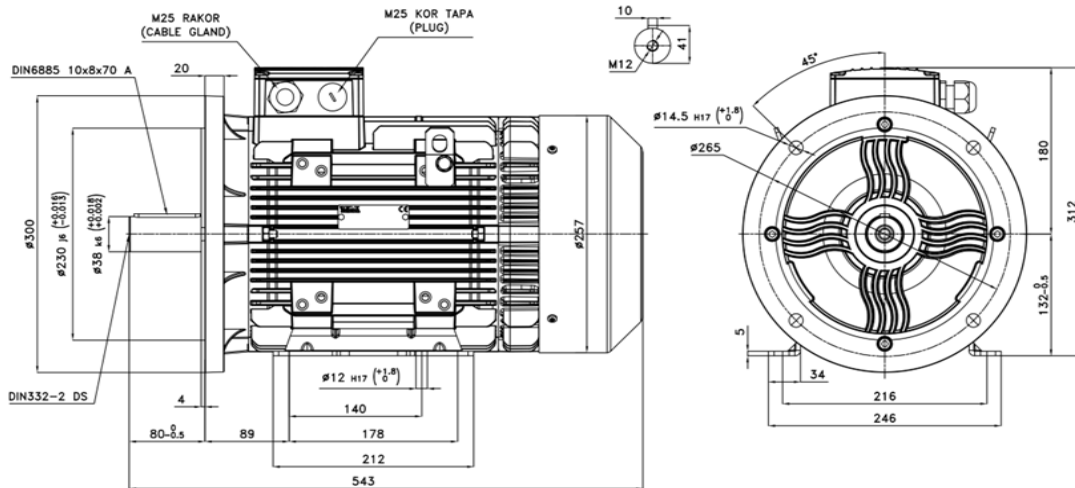
Δ / Y	U [V]	f [Hz]	P [kW]	n [rpm]	I [A]	η [%100]	η [%75]	η [%50]	Cosφ	Cl
Δ	400	50	7.50	1470	14.6	92.6	92.7	91.5	0.80	IE4
Y	690	50	7.50	1470	8.44	92.6	92.7	91.5	0.80	IE4
Δ	460	60	7.50	1770	12.9	92.4	92.2	91.4	0.79	IE4
Δ	460	60	8.70	1765	14.5	92.7	92.9	91.7	0.81	IE4

MECHANICAL DATA

Moment of Inertia [kgm ²]	: 0.04316
Bearing [DS / NS]	: 6208ZZ / 6208ZZ
Frame Material	: Cast Iron
Flange Type / Material	: B5 / Cast Iron
Cooling Fan Material	: Plastic
End Shield Material	: Cast Iron

TERMINAL BOX

Terminal Box Material	: Cast Iron
Terminal Box Position	: Top
Terminal Box Cable Entry	: M25x1.5
Terminal Box Blind Cap	: M25x1.5
Contact Screw Thread	: M5

MECHANICAL DIMENSIONS



ELK MOTOR SAN. ve TİC. A.Ş.
www.elkmotor.com.tr
+90 (282) 726 92 94

TECHNICAL DATASHEET ACCORDING TO COMMISSION REGULATION (EU) 2019/1781 THREE PHASE INDUCTION MOTOR - SQUIRREL CAGE

Type : 4EG132M4F-PA-B0-000

Date : 01.01.2023

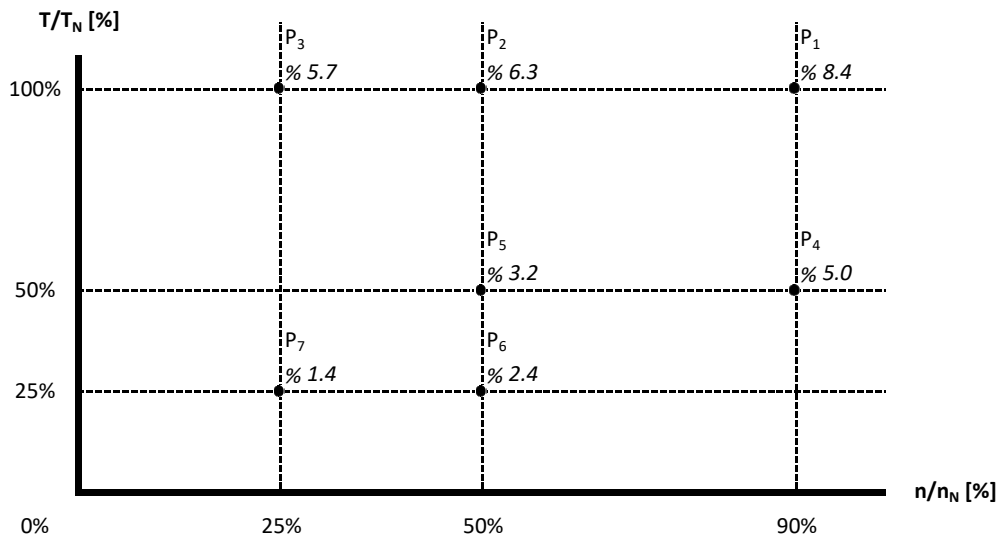
NAMEPLATE DATA

Power [kW]	: 7.50	Nominal Speed [rpm]	: 1470
Nominal Voltage [V]	: 400	Nominal Current [A]	: 14.6
Connection Type [Δ / Y]	: Δ	Nominal Moment [Nm]	: 48.7
Nominal Frequency [Hz]	: 50	Nominal Efficiency [η %]	: 92.6

THE POWER LOSSES AT SEVEN OPERATING POINTS ACCORDING TO COMMISSION REGULATION (EU) 2019/1781

Operating Point Number	Speed n/n_N [%]	Torque T/T_N [%]	Relative Power Losses P_L/P_N [%]	Efficiency η [%]
P ₁	90	100	8.4	91.5
P ₂	50	100	6.3	88.8
P ₃	25	100	5.7	81.4
P ₄	90	50	5.0	90.1
P ₅	50	50	3.2	88.8
P ₆	50	25	2.4	84.1
P ₇	25	25	1.4	81.6

MAP OF RELATIVE POWER LOSSES P_L/P_N [%]



Manufactured and tested in accordance with IEC 60034

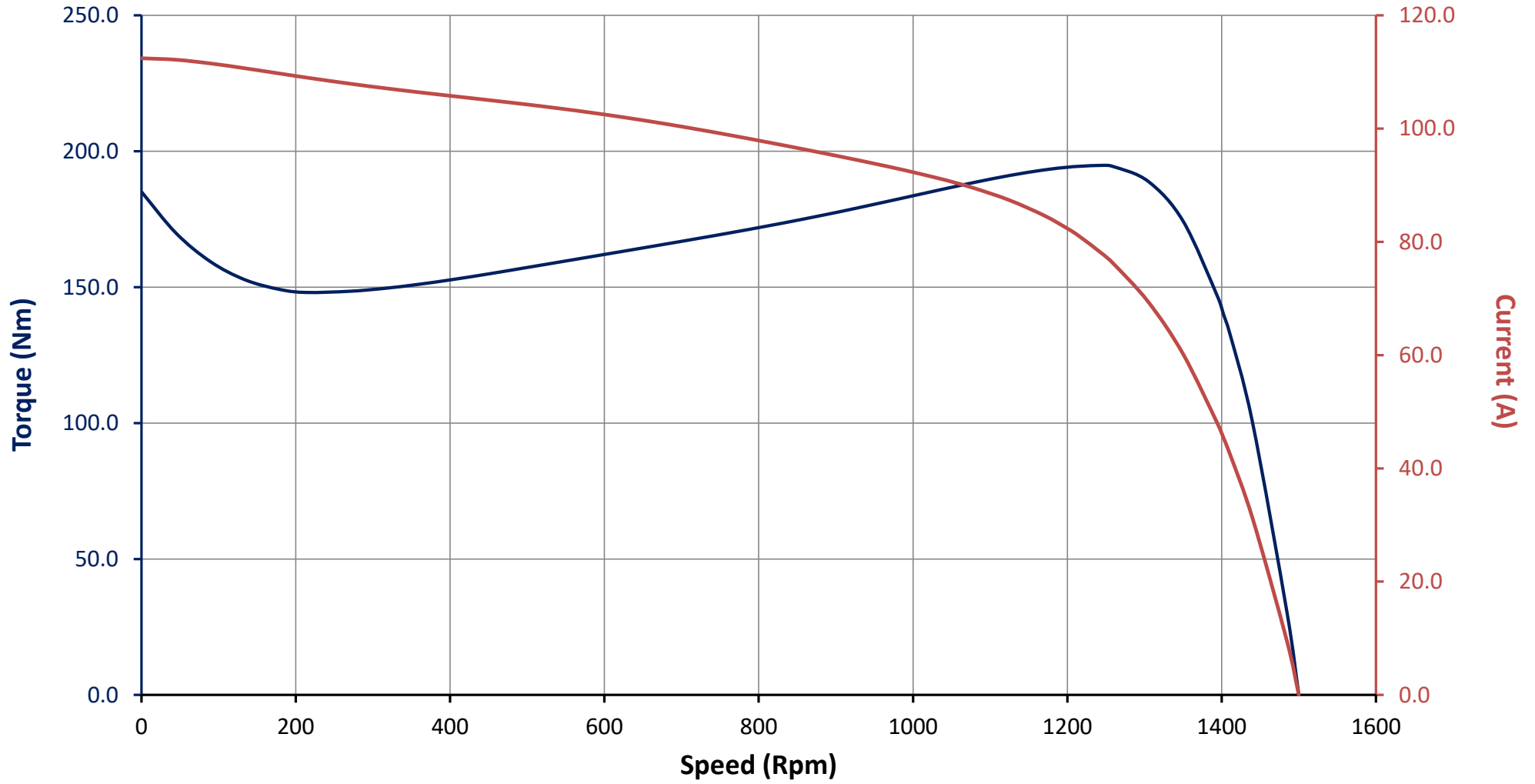
FR.AG.010 REV.NO: 04 REV.DATE: 01.01.2023

*Technical data are subject to change! There may be discrepancies between calculated and rating plate values.

*ELK Motor has right to change all the data without prior notice.

Motor Code : 4EG132M4F-PA-B0-000

Torque and Current Curves Related to Speed



Motor Code : 4EG132M4F-PA-B0-000

Performance Curves Related to Rated Output

